

IF YOU REQUIRE ANY ASSISTANCE WITH ASSEMBLY, PARTS, OR INFORMATION
PLEASE WRITE OR CONTACT US AT:

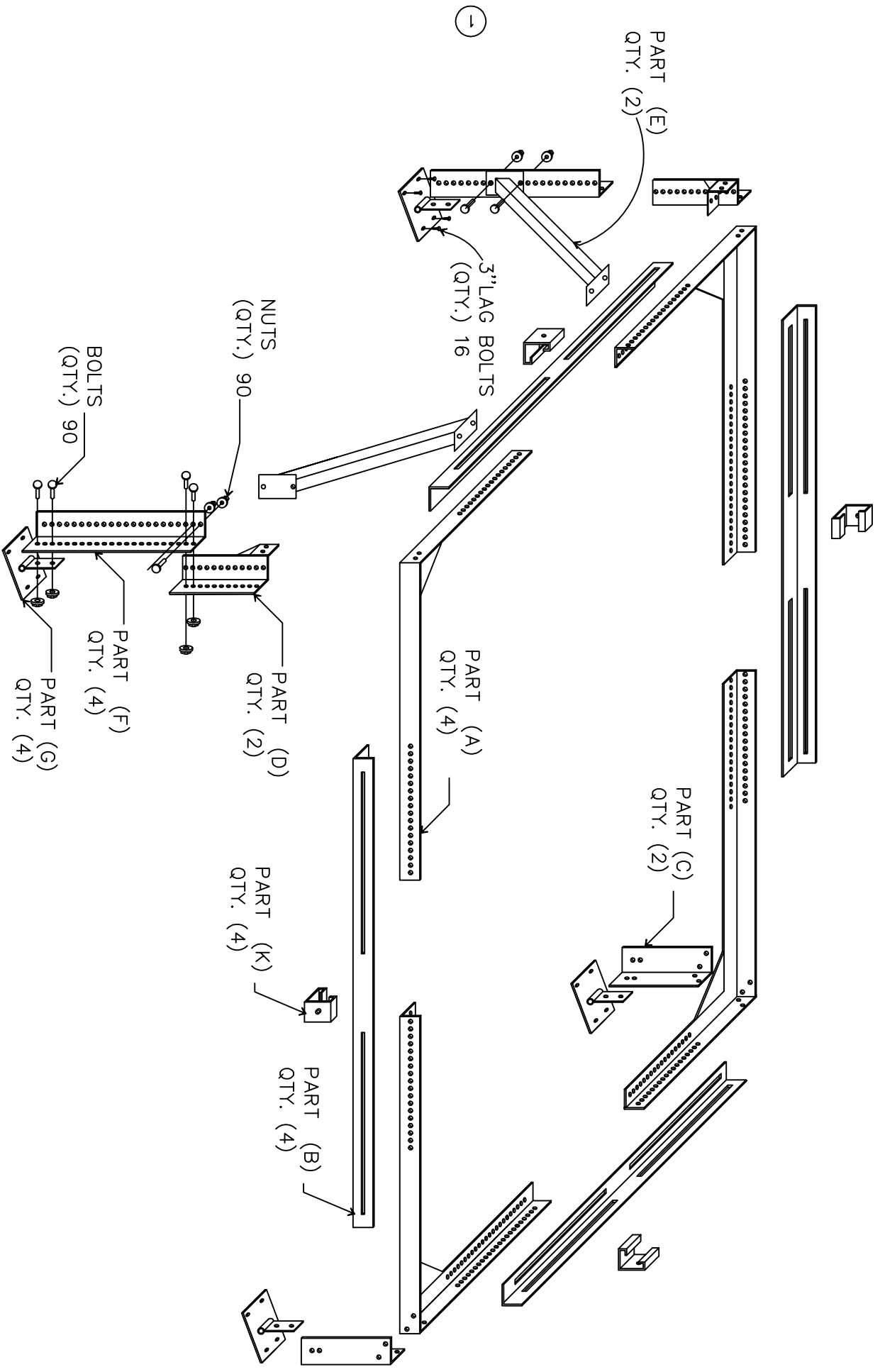
UNIVERSAL CURB INC.

505 FIFTH ST.

SAN FERNANDO, CA. 91340

TEL: (818) 365-5151 FAX: (818) 365-0088

MATERIAL LIST.

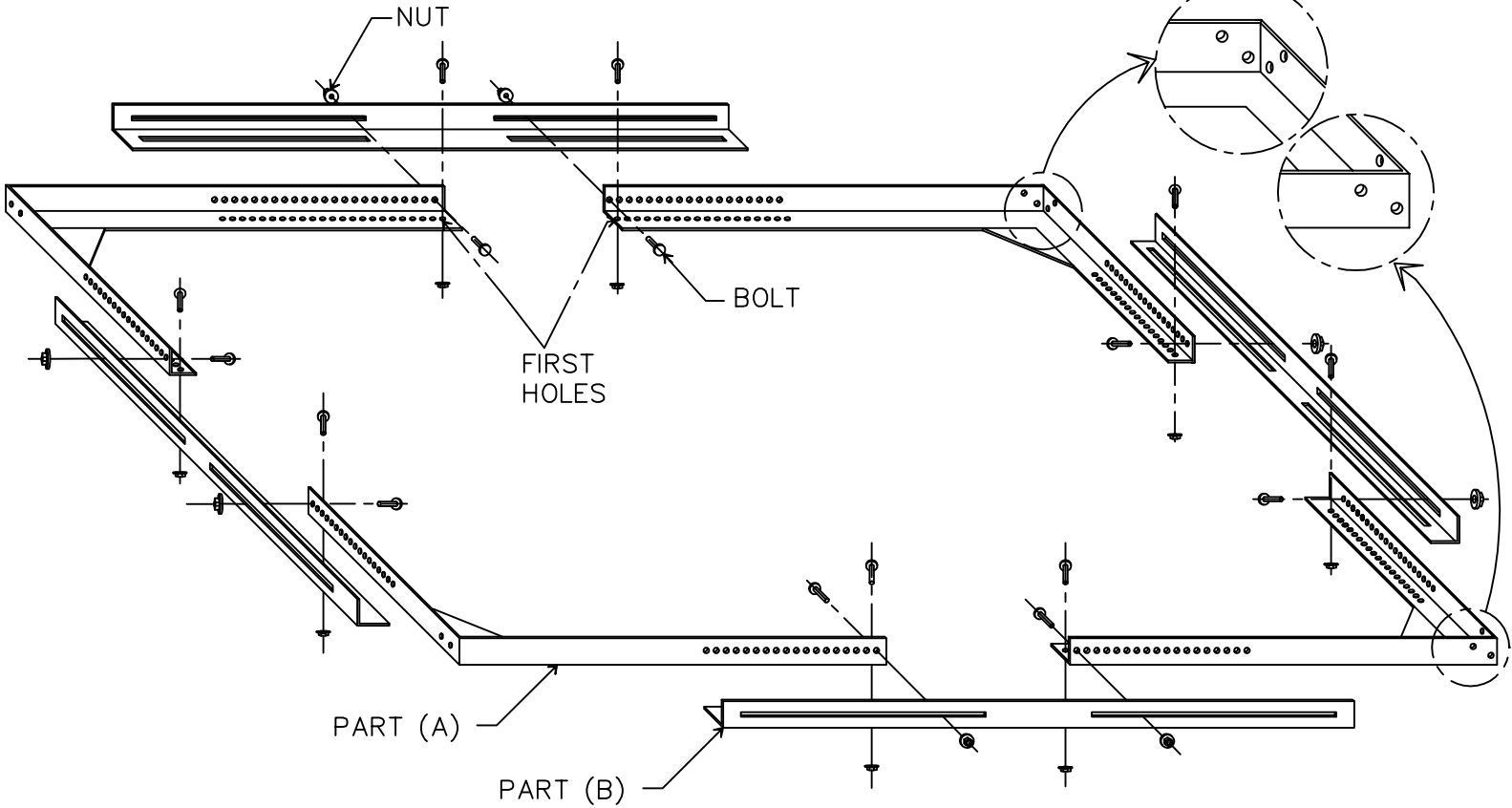


STEP 1

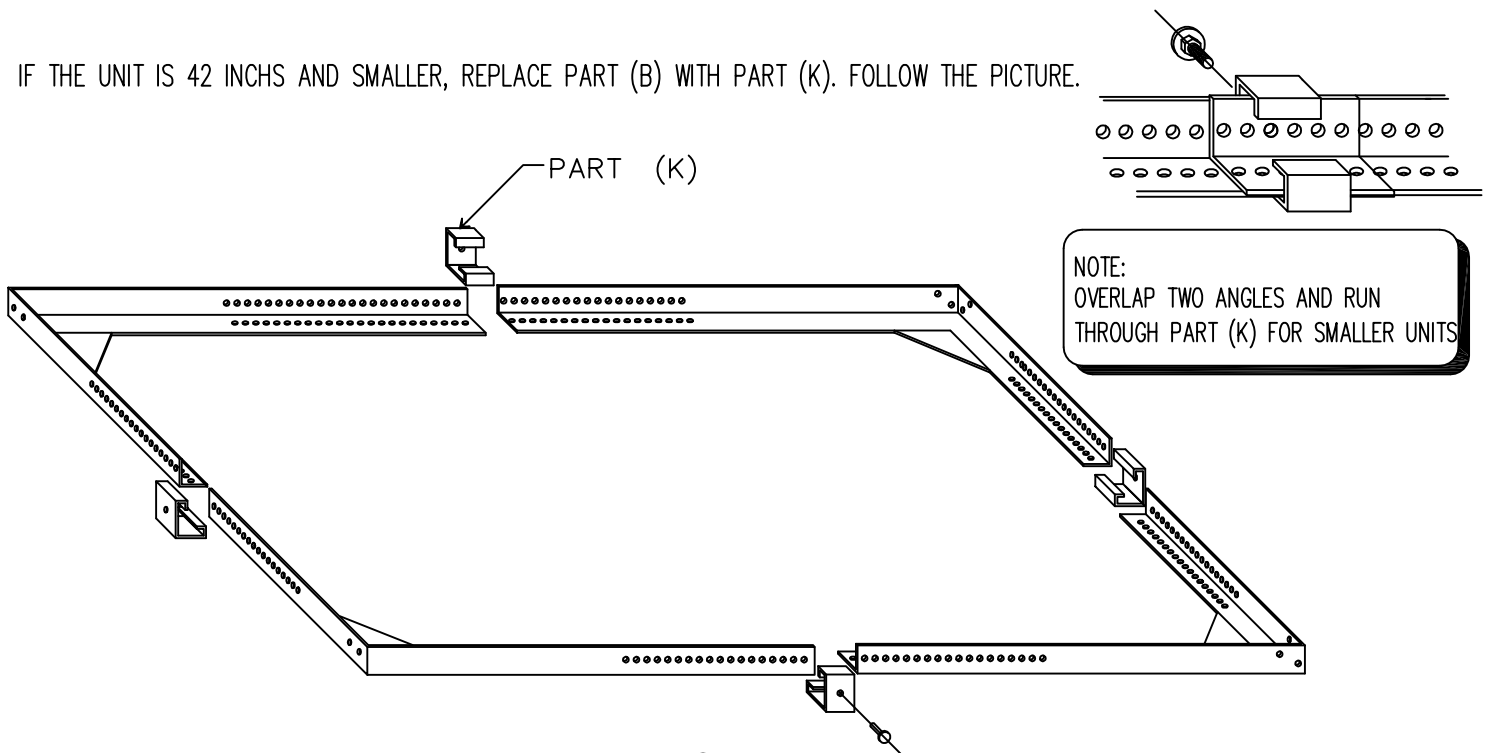
USING 16 BOLTS, PLACING IN THE FIRST HOLE OF THE PART (A), AND RUN THE BOLTS THROUGH THE SLOT OF PART (B). DO NOT TIGHTEN THE BOLTS TO A FINAL POSITION. ADJUST THE FRAME TO ANY SIZE YOU LIKE BY PULLING THE FRAME FROM EACH END AND TIGHTEN ALL 16 BOLTS.

NOTE: ALL THE BOLTS SHOULD BE PLACED INSIDE OF THE FRAME AND THE NUTS ON THE OUTSIDE OF THE FRAME.

NOTE:
BOTH PARTS SHOULD BE PLACED SIDE BY SIDE ON THE SAME SIDE.



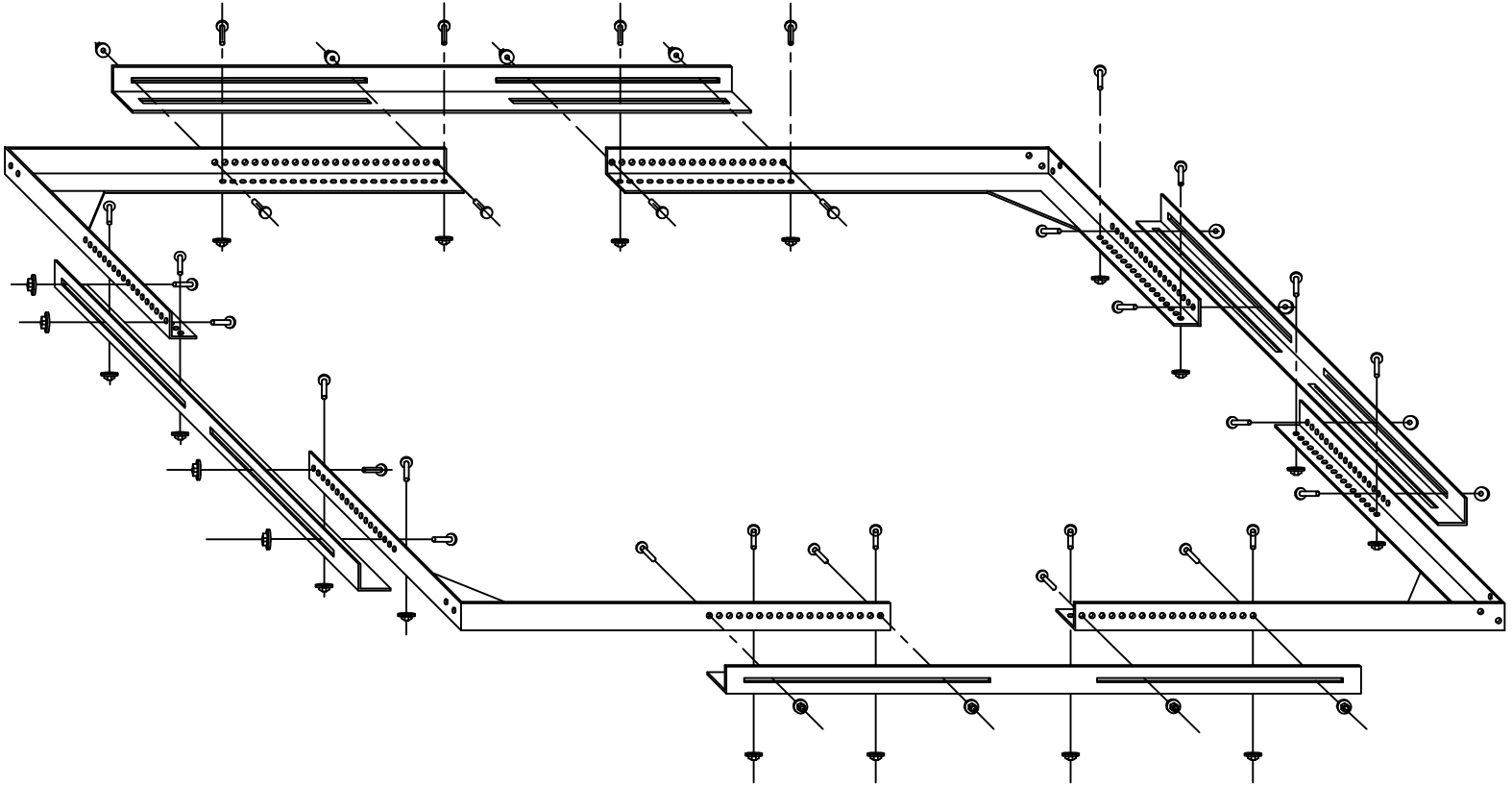
NOTE: IF THE UNIT IS 42 INCHS AND SMALLER, REPLACE PART (B) WITH PART (K). FOLLOW THE PICTURE.



STEP 2

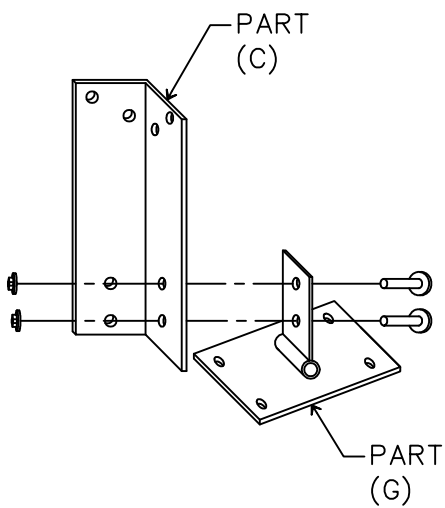
USING 16 MORE BOLTS, FOLLOW THE SAME PATTERN IN STEP 1.

NOTE: TRY TO KEEP THE BOLTS AS FAR AS POSSIBLE FROM EACH OTHER FOR MAXIMUM SUPPORT. THERE SHOULD BE 8 BOLTS AND NUTS ON EACH SIDE.



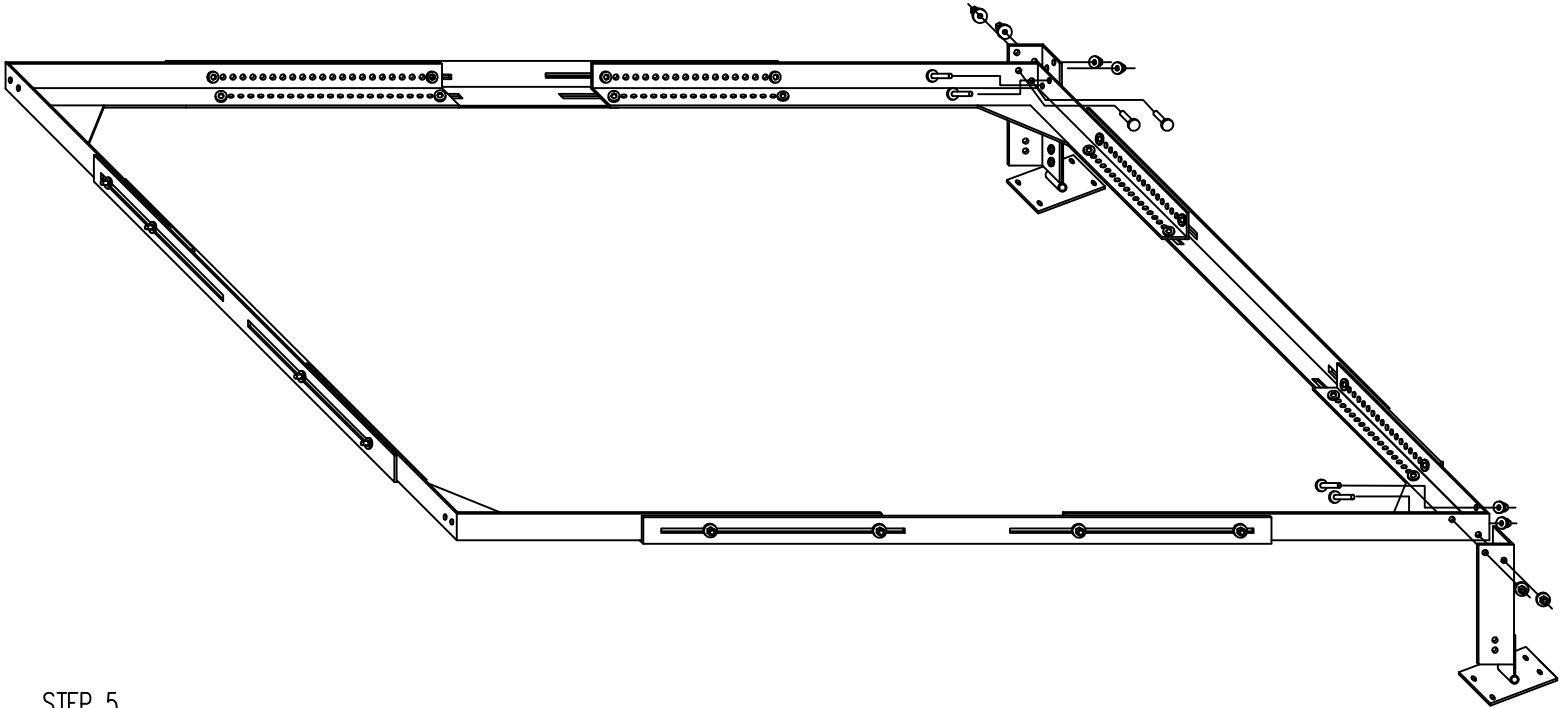
STEP 3

INSTALL PART (C) TO PART (G). USING TWO BOLTS AND TWO NUTS. FOR EACH ONE.



STEP 4

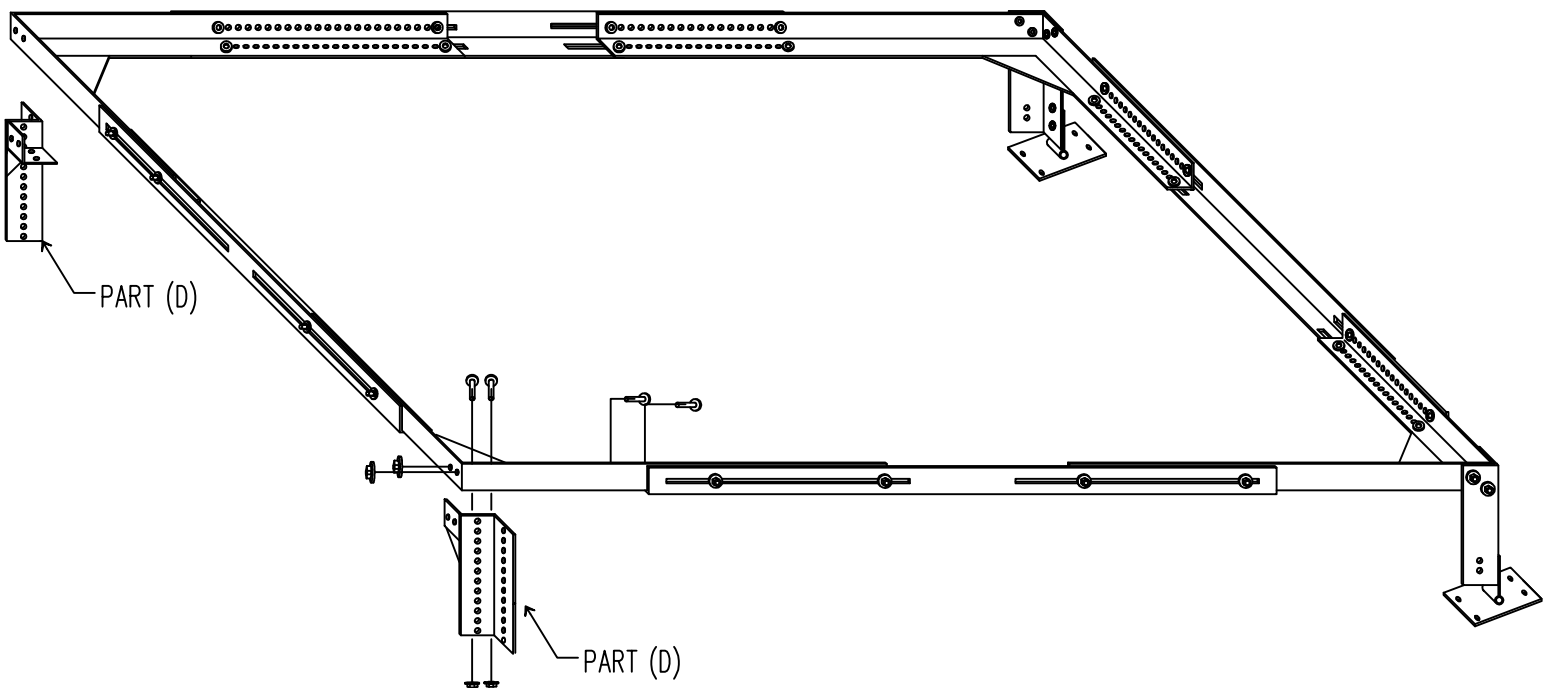
USING EIGHT MORE BOLTS AND NUTS, INSTALL BOTH LEGS TO THE MAIN FRAME.



STEP 5

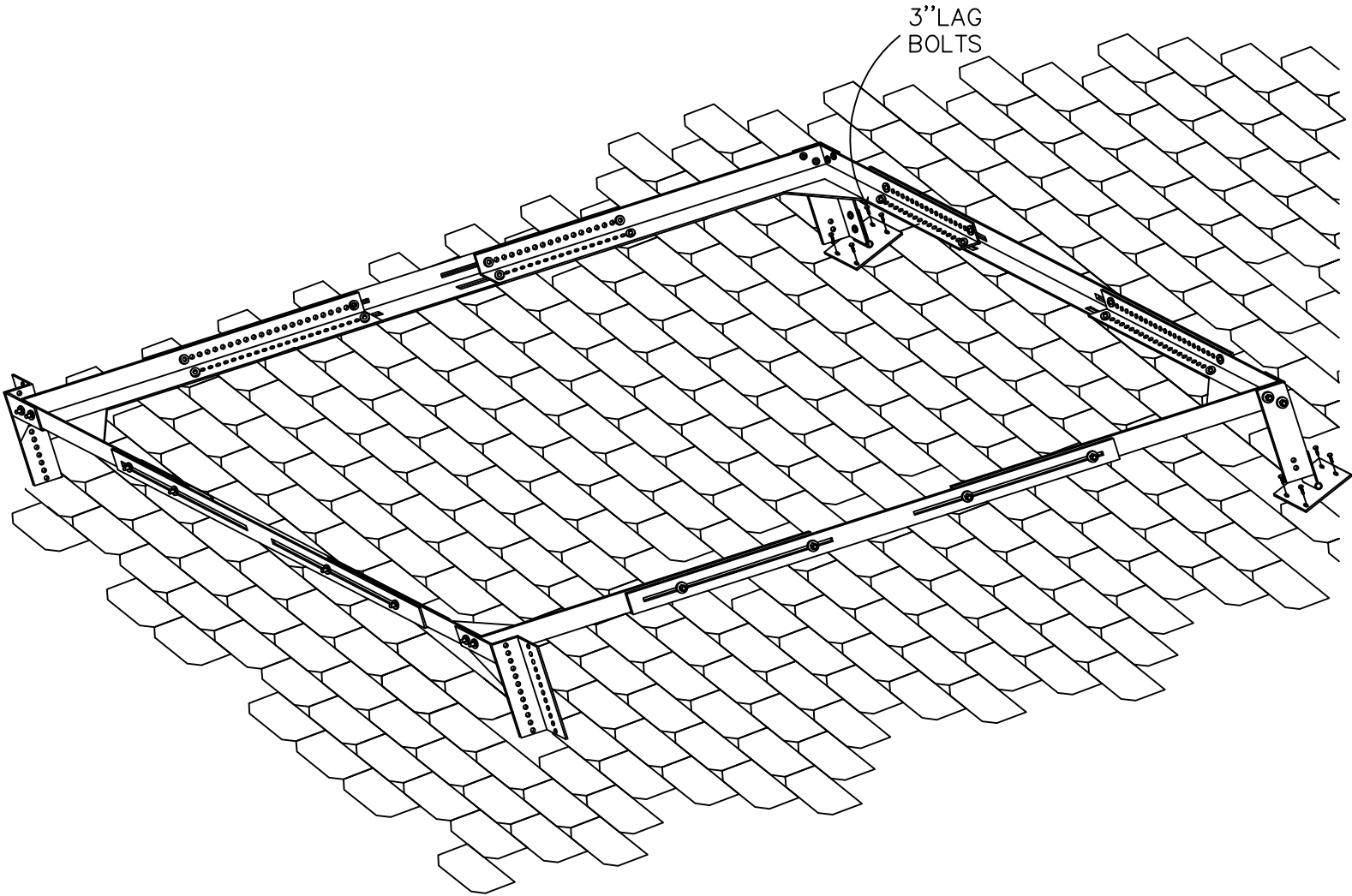
USING EIGHT MORE BOLTS AND NUTS, INSTALL BOTH PART (D) TO THE FRONT OF THE FRAME.

NOTE: BOTH PART (D) ARE NOT THE SAME. EACH ONE SHOULD BE PLACED AT THE RIGHT LOCATION BASED ON THE HOLE PATTERN.



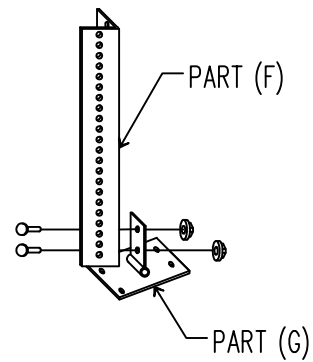
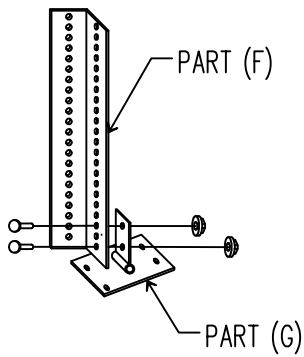
STEP 6

PLACE THE FRAME ON TOP OF THE ROOF AT THE RIGHT LOCATION. USING EIGHT LAG SCREWS FASTEN THE FRAME REAR LEGS ON TO THE ROOF.



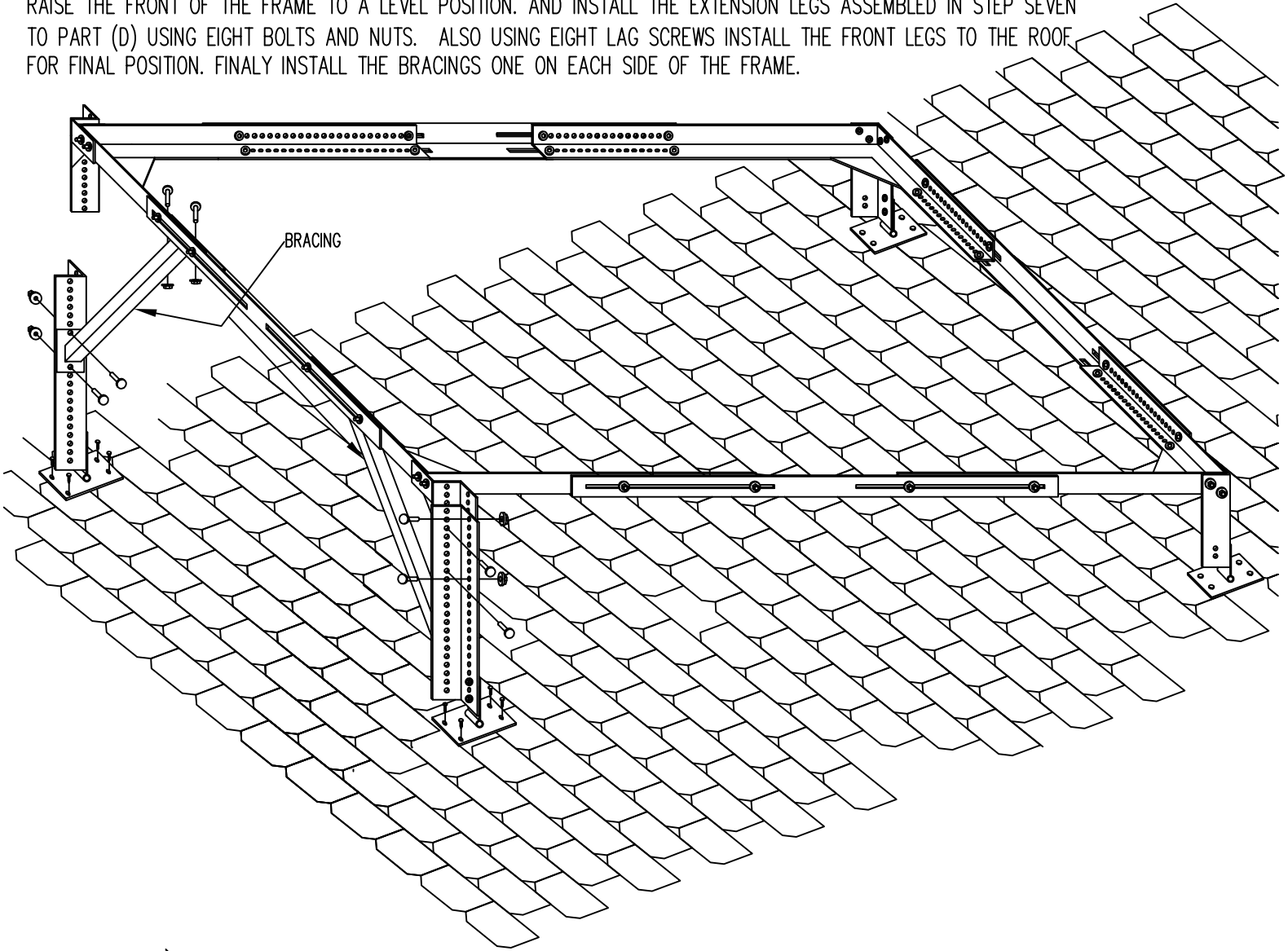
STEP 7

USING FOUR BOLTS AND NUTS, INSTALL BOTH PART (G) TO PART (F) ALSO KNOWN AS EXTENSION LEGS.



STEP 8

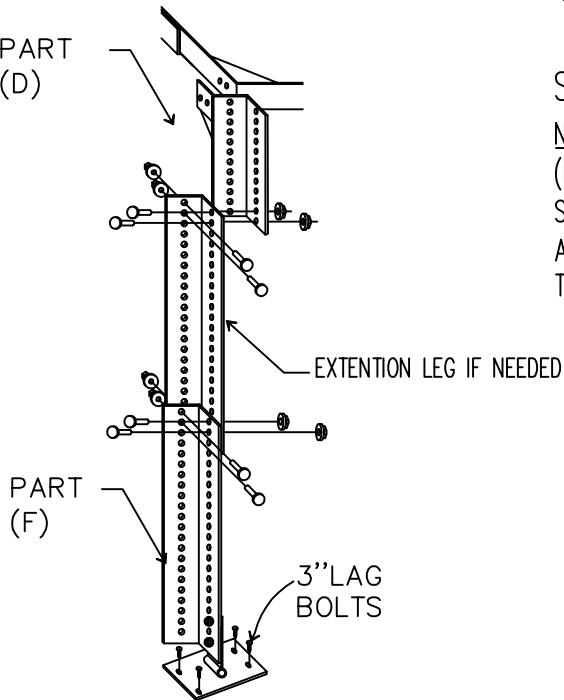
RAISE THE FRONT OF THE FRAME TO A LEVEL POSITION, AND INSTALL THE EXTENSION LEGS ASSEMBLED IN STEP SEVEN TO PART (D) USING EIGHT BOLTS AND NUTS. ALSO USING EIGHT LAG SCREWS INSTALL THE FRONT LEGS TO THE ROOF FOR FINAL POSITION. FINALLY INSTALL THE BRACINGS ONE ON EACH SIDE OF THE FRAME.



PART (D)

STEP 9

NOTE: IF THE EXTENSION LEGS ARE NOT LONG ENOUGH TO BE CONNECTED TO PART (D) IN ORDER TO KEEP THE FRAME LEVEL, USE TWO MORE EXTENSION LEGS FOR BOTH SIDE OF THE FRAME AND PLACE THEM IN BETWEEN PART (D) AND THE PART (F) ASSEMBLED IN STEP SEVEN. REFER TO THE PICTURE. NOTE: PART (F) IS SAME AS THE EXTENSION LEG.



NOTE:
FOR FLAT ROOF, DO NOT USE THE EXTENSION NOR THE BRACINGS.

